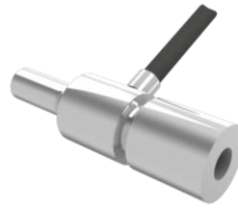


FTCP series

Miniature tension/compression load cell

Ref : 3101

Rev : C



DESCRIPTION

This type of miniature sensor is intended for compressive force measurements for both static and dynamic applications. The sensitive element is equipped with highly stable micro machined silicon gauges. Its 2 threads allow easy installation in an industrial environment, especially when space is an important criterion.

In addition, MESUREX offers a wide range of packaging and processing allowing the feeding and amplification of the signal, as well as the display of the sensor measurement, in order to provide a complete calibrated measurement chain.

MESUREX is a sensor manufacturer. We can adapt most sensors according to your needs. Please [contact us](#).

MEASURING RANGES (MS)

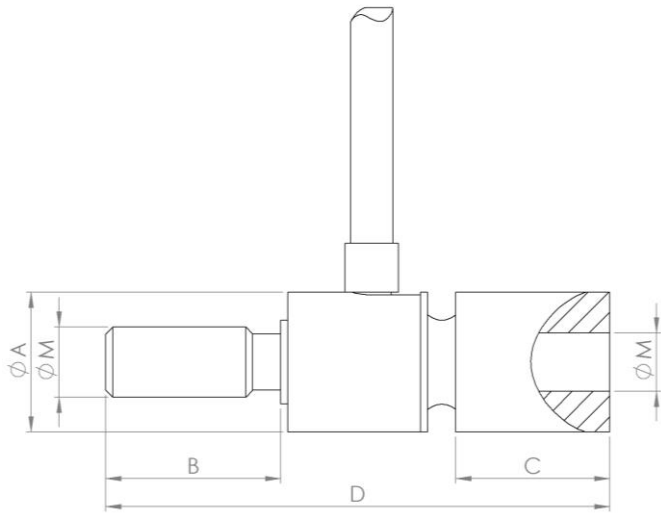
Measuring range (in N)	500	1000	2000	5000	10000
Signal at FSO	± 50 mV	± 100 mV	± 100 mV	± 100 mV	± 100 mV
Max over range	2 x FSO	2 x FSO	2 x FSO	2 x FSO	2 x FSO
Material	Aluminium	Aluminium	Stainless steel	Stainless steel	Stainless steel

TECHNICAL DATA

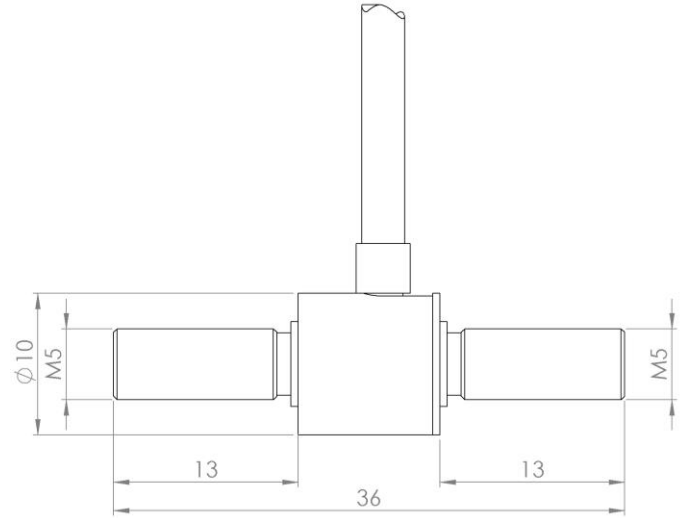
PARAMETERS	VALUES	NOTES
Supply voltage	10 Vdc	
Operating temperature	-40°C to 120°C	
Compensated temperature	0°C to 60°C	
Linearity	≤± 0.5% FSO	
Hysteresis	≤± 0.5% FSO	
Zero drift	<2% FSO /50°C	Within the compensated range
Sensitivity drift	<2% of the read value /50°C	Within the compensated range
Input impedance	1KΩ à 3KΩ	
Output impedance	500Ω à 1KΩ	
Insulation	> 100MΩ at 50 Vdc	
Threading	Male / Male Male / Female Female / Female	Standard
Output cable	2 m	Length on request
Calibration	Compression	

DIMENSIONS

FTCP—NMF

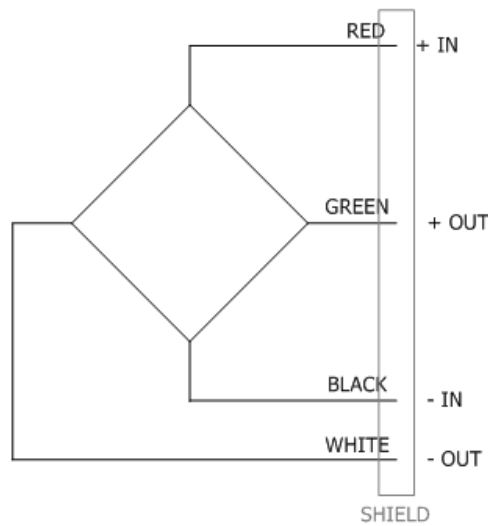


FTCP--N- (500N to 2KN)

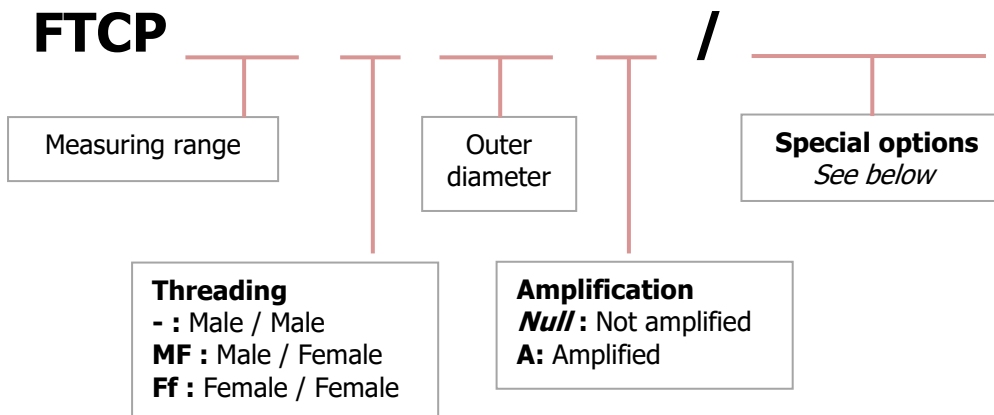


In	ϕA	B	C	D	ϕM
500N to 2KN	10	12.5	11	36	M5
5KN to 10KN	16	14	13	46	M10

WIRING PLAN



ORDER INFORMATION



- **Special options**

OPTION	INDICATION
Cable length	Length in metres (M)
Other options	Contact us

- Example: **FTCP2KNMF10/L2M**
- Measuring range: 2000 N
 - Thread: M5
 - Main diameter: 10mm
 - 2-meter-long cable

CONTACT

MESUREX
13 Rue des Corroyés
78730 Saint Arnoult en Yvelines (France)

Tel : +33 (0) 1 30 41 23 62
Mail: mesurex@mesurex.fr
Web : www.mesurex.fr