

Relative and absolute pressure transmitter IO Link output

-1 ... 0 - 60 bar

Ref : 4011 (P 2 IO)

Rev :



DESCRIPTION

These compact transmitters are based on ceramic technology and are recommended in many industrial applications.

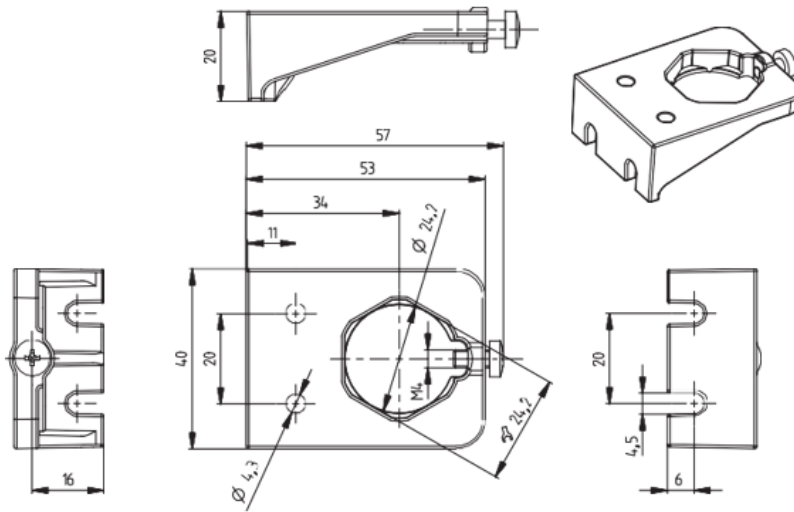
These transmitters with IO-Link communication technology are ideal for 4.0 industrial applications. Based on digital point-to-point communication, IO-Link enables a simple and standardized connection, allowing the user to easily wire the unit and access a wide range of specific device, and process data with real-time configuration of the device. IO-Link also offers various diagnostic options, so that the sensor can be continuously monitored.

TECHNICAL CHARACTERISTIQUES

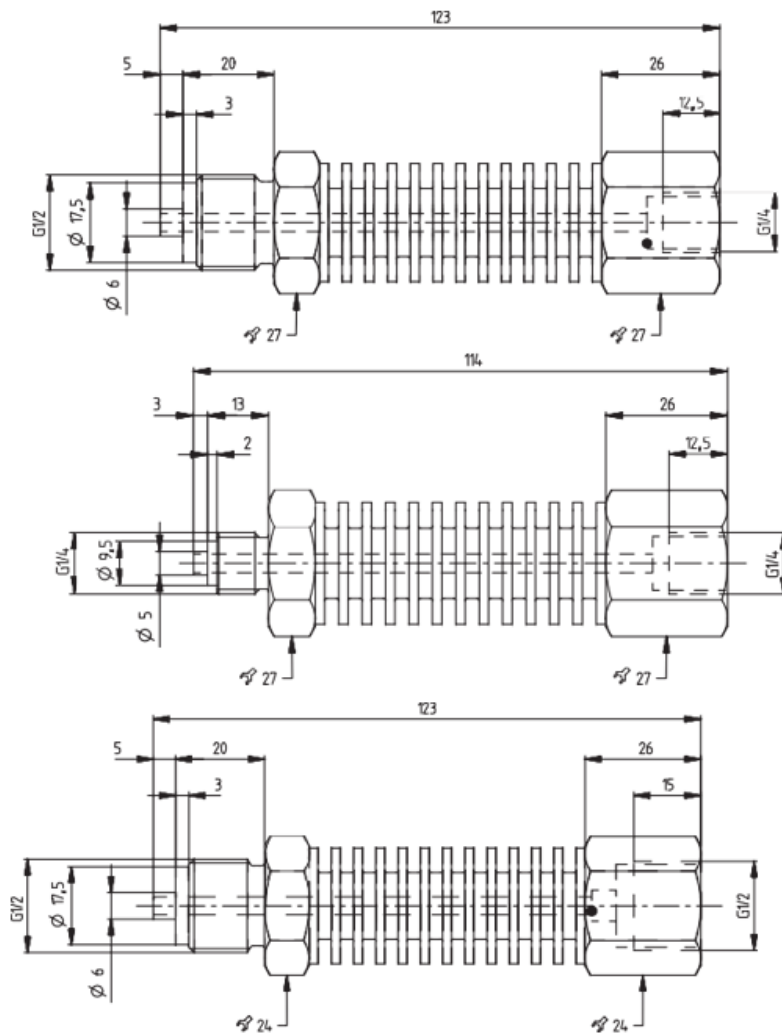
MODEL					
INPUT	BAR	- Relative : -1 ... 0 - 60 bar			
Pressure range		- Absolut : 0 ... 1 - 16 bar			
Max. overload / Burst pressure		≤ 4 bar 3.0 x FSO > 4 bar 2.5 x FSO			
Fluid		Liquids, gas			
Body		Stainless-steel 1.4404 / AISI 316L			
Connection		Polyarylamide 50% GF UL 94 V-0			
Electric characteristic		Outlet			
4-wire-Techn.		IO-Link	Power supply	Max output current	Absorbed current
Electric characteristic		500 VDC	18 ... 33 VDC	100 mA per switch output	< 15 mA
4-wire-Techn.					
Insulation tension					
ENVIRONNEMENT					
Ambient temperature		from -30 to +85°C			
Storage temperature		from -50 to +100°C			
FPM		-15 ... +100°C			
EPDM		-40 ... +100°C			
NBR		-20 ... +100°C			
MVQ		-40 ... +100°C			
FPM		-40 ... +100°C			
IO-Link					
Specification		V1.1			
Port type		Class A			
Transmission speed		COM2 (38.4 k Baud)			
Outlet type		PNP, NPN, PushPull			
Comportement dynamique					
Délai de disponibilité		50 ms			
Temps de réponse		typ. < 2 ms			
Temps du cycle du processeur		< 3.3 ms			
Cycles de pression		< 100 Hz			

ACCESSORIES

Mounting bracket

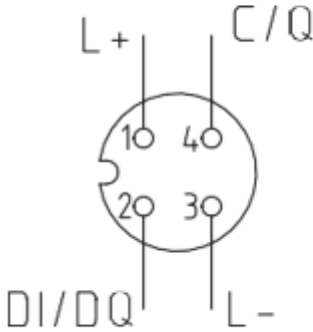


Cooler

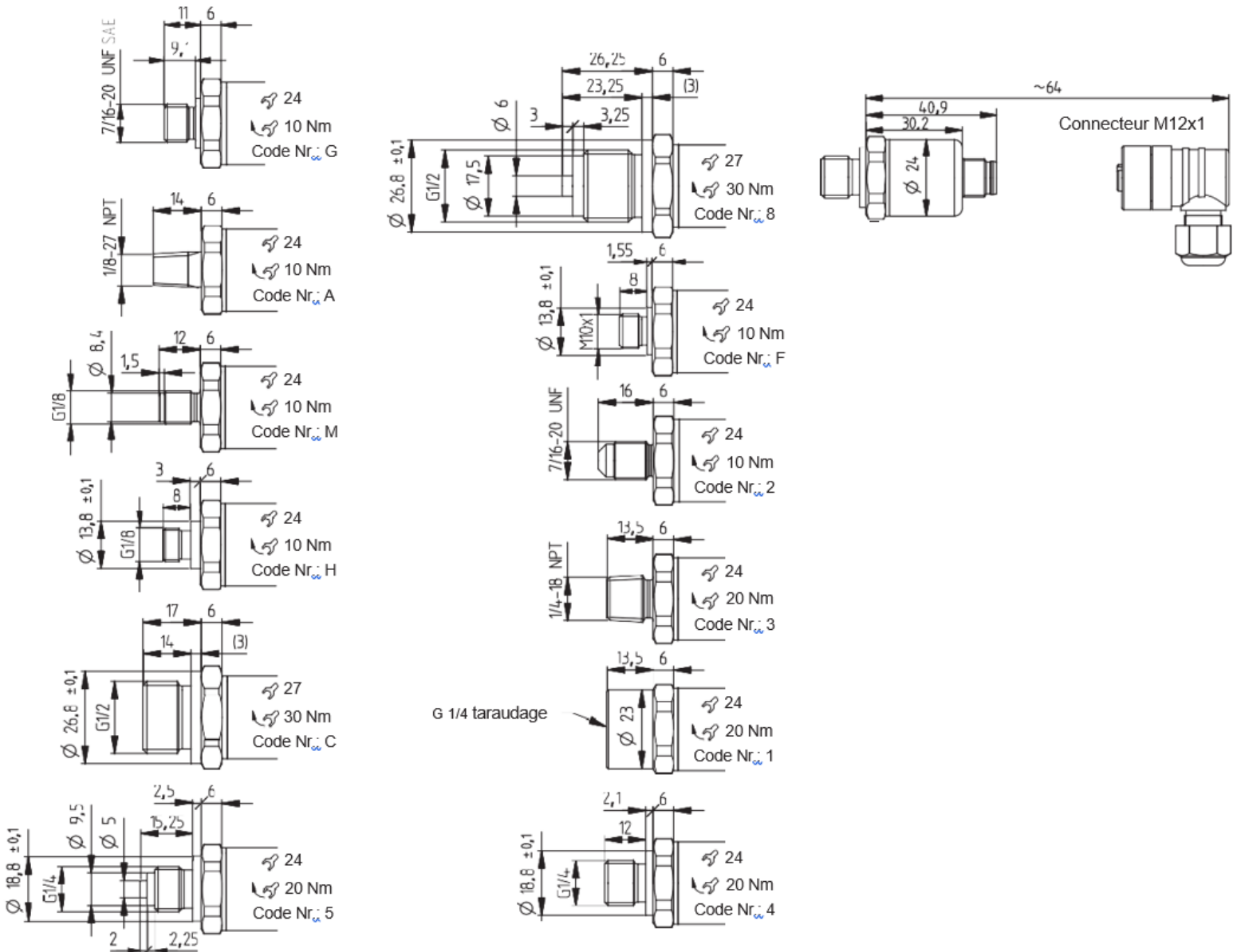


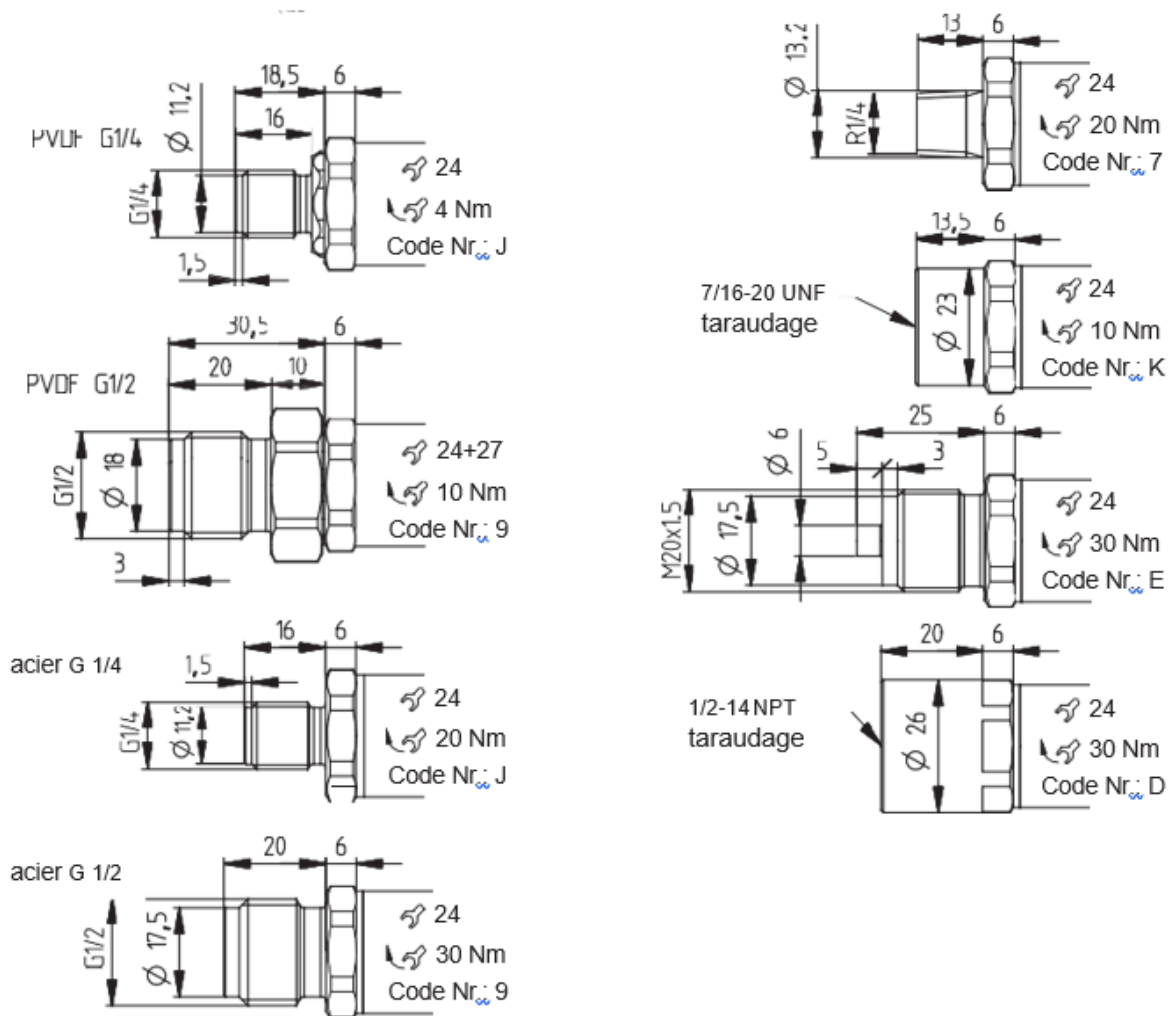
DIMENSIONS (in mm) / ELECTRIC CONNECTIONS

4-wire-Techn.
Connector M12x1



- Legend:**
 L+ = Power supply +
 L- = Power supply -
 C/Q = IO-Link/1
 DI/DQ = switch output 2





CONTACT

MESUREX

13 Rue des Corroyés
78730 Saint Arnoult en Yvelines (France)

Tel : +33 (0) 1 30 41 23 62

Mail : mesurex@mesurex.fr

Web : www.mesurex.fr