

# PASSAGES ÉTANCHES ACIER INOX

Ref : PEC

Rev : B

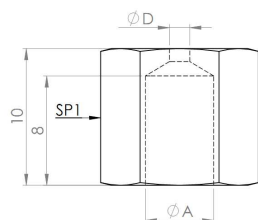


## CARACTERISTIQUES TECHNIQUES

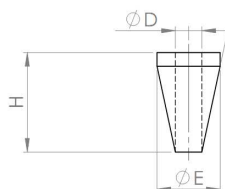
REFERENCE	TETE			OLIVE			CORPS			
	D	A	SP1	E	H	B	C		SP2	
PEC1.0M4	1.1	M6x100	H10	3.4		5.6	M6x100	M4x70		H10
PEC1.0M5	1.1	M6x100	H10	3.4		5.6	M6x100	M5x80		H10
PEC1.0M6	1.1	M6x100	H10	3.4		5.6	M6x100	M6x100		H10
PEC1.0M8	1.1	M6x100	H10	3.4		5.6	M6x100	M8x125		H14
PEC1.0M10	1.1	M6x100	H10	3.4		5.6	M6x100	M10x100		H14
PEC1.5M4	1.6	M6x100	H10	3.8		6	M6x100	M4x70		H10
PEC1.5M5	1.6	M6x100	H10	3.8		6	M6x100	M5x80		H10
PEC1.5M6	1.6	M6x100	H10	3.8		6	M6x100	M6x100		H10
PEC1.5M8	1.6	M6x100	H10	3.8		6	M6x100	M8x125		H14
PEC1.5M10	1.6	M6x100	H10	3.8		6	M6x100	M10x100		H14
PEC2.0M5	2.1	M6x100	H10	3.8		6	M6x100	M5x80		H10
PEC2.0M6	2.1	M6x100	H10	3.8		6	M6x100	M6x100		H10
PEC2.0M8	2.1	M6x100	H10	3.8		6	M6x100	M8x125		H14
PEC2.0M10	2.1	M6x100	H10	3.8		6	M6x100	M10x100		H14
PEC3.0M6	3.1	M8x100	H10	4.5		8	M8x100	M6x100		H10
PEC3.0M8	3.1	M10x100	H14	4.5		8	M10x100	M8x125		H14
PEC3.0M10	3.1	M10x100	H14	4.5		8	M10x100	M10x100		H14
PEC1.5116BSPCL	1.6	M6x100	H11	3.8		6	M6x100	1/16 BSPT		H11
PEC3116BSPPI	3.1	M8x100	H11	4.5		8	M8x100	1/16 BSPP		H11

## DIMENSIONS

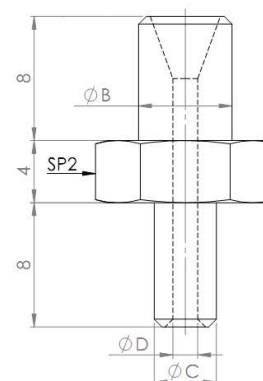
TETE



OLIVE



CORPS



### CONTACT

**G.R.D.I.A MESUREX**  
19 Rue des petits Meurgers  
78120 Sonchamp

Tel : +33 (0) 1 30 41 23 62  
Fax : +33 (0) 1 30 41 23 80  
Mail : mesurex@mesurex.fr