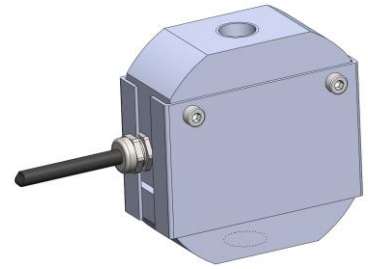


Série FTCS

Traction/compression S force sensor

Réf : 3301

Rev : D



DESCRIPTION

This type of sensor is very robust suitable for measuring high accuracy on the test bench as in industry. His level of protection enables it to be used in aggressive environments. An optional analog output high integrated level sensor gives it great versatility and ease of use and exploitation.

MEASURING RANGES (EM)

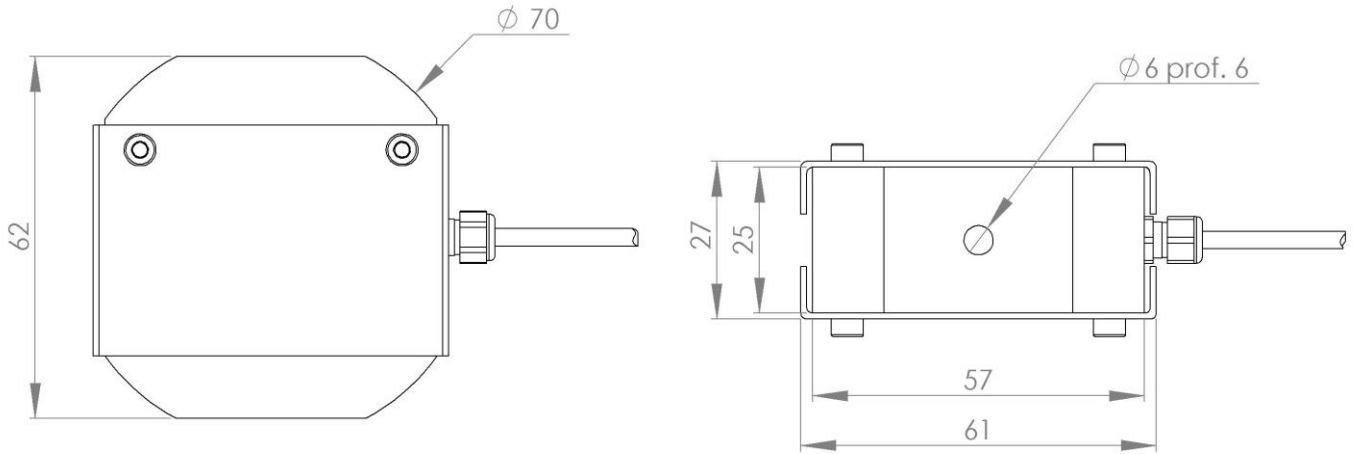
Measuring range in Newtons	50	100	200	500	1000	2000	5000	10000
Admissible surcharge	1,5 x EM	1,5 x EM	1,5 x EM	1.5 x EM	1.5 x EM	1.5 x EM	1.5 x EM	1.5 x EM
Material	Aluminium	Aluminium	Aluminium	Aluminium	Aluminium	Aluminium	Stainless steel	Stainless steel
Thread	M6 x 1	M6 x 1	M6 x 1	M12 x 1,5	M12 x 1,5	M12 x 1,5	M12 x 1,5	M12 x 1,5

DONNEES TECHNIQUES

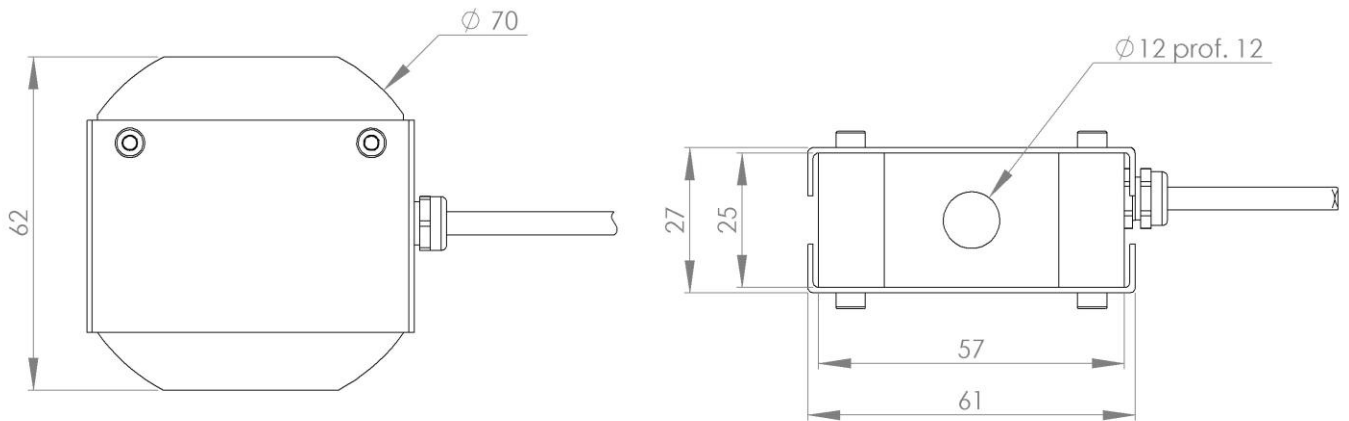
PARAMETERS	VALUES	NOTES
Supply	10 Vdc	10 à 30Vdc in amplified version
Operating temperature	-20°C to 80°C	
Storage temperature	-30°C to 85°C	
Temperature compensated	0°C to 60°C	
Drift signal	<0,5% of EM / 60°C	In CTR
Zero drift	<0,5% of EM / 60°C	In CTR
Precision	± 0.1%	
Linearity	± 0.1%	
Hysteresis	± 0.1%	
Sensitivity	2 mV/V	
Offset	± 0.5% of EM	
Isolation	≥ 1000 MΩ under 50 Vcc	
Protection	IP50	
Thread	M6 x 1 M12 x 1,5	De 50 to 200 N De 500 to 10000 N
Input Impedance	350Ω	
Output Impedance	350Ω (gauge output) 1kΩ (amplified output)	0,5 à 4,5 V in amplified version
Output	Câble	2m standard
Calibration	Traction / Compression	
Material	Aluminium AU4G-T4 Stainless steel Z8CND17-04	De 50 to 2000 N De 5000 to 10000 N

DIMENSIONS

FTCS---NM6-70

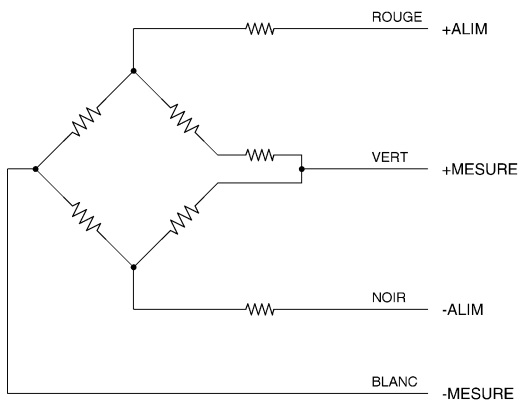


FTCS---NM12-70

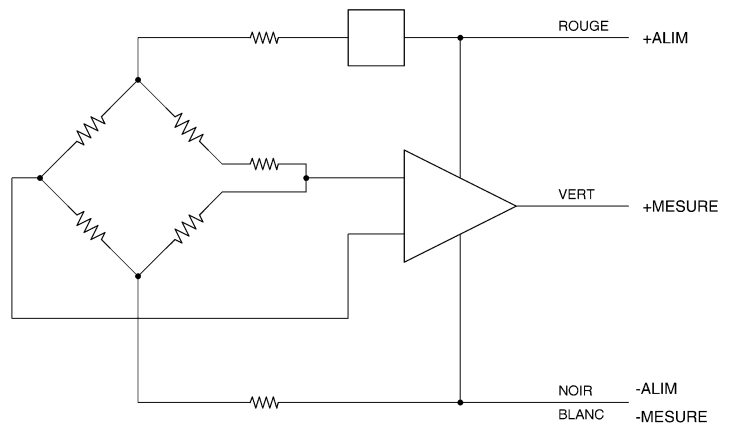


PLAN WIRING

FTCS

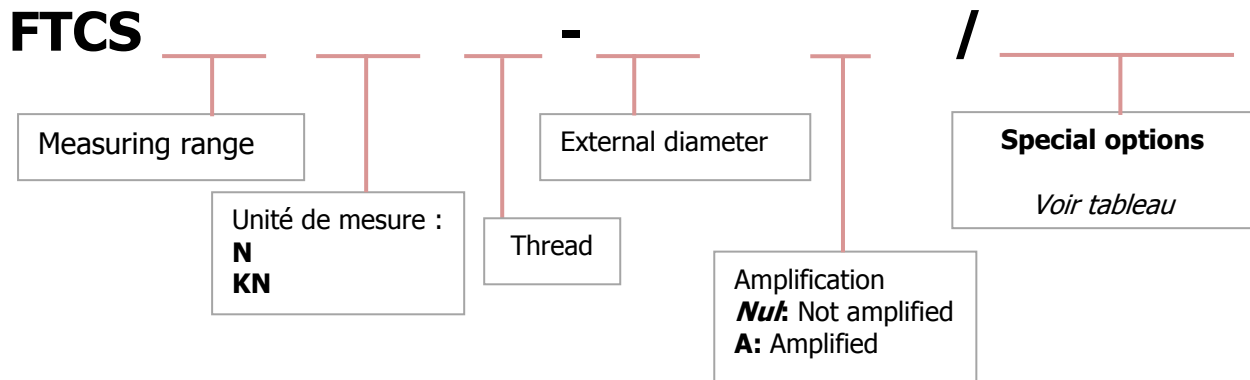


Gauge bridge output



Amplified output

ORDERING INFORMATION



- **Special options**

OPTION	INDICATION
Cable length	Length in meters (M) 2m standard

Exemple: **FTCS50NM6-70**

- Measuring range: 50 N
- Thread : M6
- Outside diameter: \varnothing 70
- Not amplified
- Cable length : 2 mètres

FTCS5KNM12-70A/1.5M

- Measuring range: 5000 N
- Thread : M12
- Outside diameter: \varnothing 70
- Amplified
- Cable length : 1,5 mètre

CONTACT

G.R.D.I.A MESUREX

13 Rue des Corroyés
78730 Saint Arnoult en Yvelines

Tel : +33 (0) 1 30 41 23 62

Fax : +33 (0) 1 30 41 23 80

Mail : mesurex@mesurex.fr